



Announcing IQ Central v1.7

Quixote Traffic is pleased to announce the release of Version 1.7 of the IQ Central® Central-System Traffic Management Software. This release adds a manual Time Sync function for all devices, adds the ability to override groups of controller devices, enables the ability to remotely clear the logs of devices that have that capability, allows devices to be restarted from central, and addresses some issues that were seen in previous releases of the software. This update is recommended for all users of IQ Central.

Product **IQ Central**
Version..... **Version 1.7**
Release Date **November 4, 2008**

Product Requirements

This release of the software requires a Windows compatible computer, running Windows XP. For all features to work, the system must also have Microsoft Office, version 2000 or version 2003, installed and properly configured on the system.

Important Note: IQ Central is not yet supported on Windows Vista. IQ Central cannot currently be used with Office 2007.

To connect with field hardware, communications channels to those devices will also need to be available. Devices capable of using the NTCIP protocol natively, such as the Peek IQ-ATC and ASTC family of controllers, can be connected to IQ Central directly via one of these communications channels. Other, non-NTCIP compatible devices that will be connected to the software will need an additional piece of hardware; an IQ Connect® translator unit, installed somewhere near (or in the case of Peek 3000E controllers, within) the device.

If upgrading from a previous version of IQ Central, we recommend that you first make backup copies of the IQ Central database and associated files, and uninstall the earlier version of the application. For such system updates, additional conversion work on the earlier IQ Central database may need to be performed by a Peek Traffic technician prior to use. Please contact Peek Traffic Tech Support for additional information about upgrading IQ Central.

Contents

Product Requirements	1
Compatibility Matrix	2
Installation Notes	3
Before Installing IQ Central	
Version 1.7	3
Installation Steps	3
New Features	5
Time Sync	5
Central Override by Group	11
Remote Clearing of Logs	12
Remote Device Restart	14
Issues Addressed in this Release	15
Additional Guidance on IQ Central	17
Documentation	17
Technical Support	17

Table 1 – IQ Central Version 1.7 Workstation Requirements

Minimum Workstation		Ideal Workstation or Server
Processor	Intel P4 or equivalent, or better	Intel P4 or equivalent, or better
Processor Clock speed	1.7 GHz	2.0 GHz
RAM	1 GB	1 GB
Free HD Space	5 GB	10 GB

Compatibility Matrix

This release of Version 1.7 of the IQ Central software will work with the following traffic-control products:

Table 2 – IQ Central Version 1.7 Compatibility Matrix

Device	Will work with IQ Central v1.7	Translator Firmware		Controller Firmware Required
		Part #	Version	
Traffic controllers and masters				
IQ ATC® Controller (NY CBD version)	Yes	N/A	None required ¹	01-00-0129
IQ ATC Controller (TS2 Type 2 version)	Yes	N/A	None required*	01-00-0129
Multisonics 820A OSAM Controller - Isolated Local	No	97-600	Not yet available	N/A
Multisonics OSAM-32 Master Controller	Yes	97-599	v2.0 or higher	v2.22
- 820A controller under an OSAM-32	Yes	N/A	Supported by the OSAM-32 translator	Rev K
Peek 3000E Controller - Isolated Local	Yes	97-602	v2.1 or higher	v3.6.2
Peek LMD 9200 Controller - Isolated Local	No	97-602	v2.1 or higher	v7.4.21
Peek M3000E Master Controller	Yes	97-601	v2.1 or higher	v2.8.2
- Peek 3000E controller under an M3000	Yes	97-602	Supported by M3000 translator	v3.6.2
- LMD40 controller under an M3000	No	N/A	Not yet available	N/A
- LMD8000/9200 controller under an M3000	No	97-602	v2.1 or higher	v7.4.20
Traconex TMM500 Master Controller	Yes	97-603	v2.1 or higher	C.0.B
- Traconex 390CJ controller under a TMM500	Yes	N/A	Supported by TMM500 translator	V.4.D
Traconex TMP 390 CJ Controller - Isolated Local	No	97-604	Not yet available	N/A
Transyt 3800EL Master Controller	Yes	97-605	v2.0 or higher	v17.4
- 1880EL controller under a 3800EL	Yes	N/A	Supported by 3800EL translator	92 R 09
Transyt 1880EL Controller - Isolated local	No	97-606	Not yet available	N/A
Wapiti 170 - Isolated local	No	97-608	Not yet available	N/A
Other types of devices				
Cohu NTCIP Camera	Yes	N/A	None required*	N/A
SSI Weather Station	Yes	N/A	None required*	N/A
Overhead Sign (NTCIP)	Yes	N/A	None required*	N/A
RTMS Sensor (NTCIP)	Yes	N/A	None required*	N/A

¹ Devices that speak NTCIP natively, such as the IQ ATC controller and NTCIP compatible signs and sensors, do not need separate translator hardware.

Installation Notes

IQ Central Version 1.7 should not be installed without the guidance of a Peek Traffic customer support representative. The following procedures describe the basic process to install or upgrade an IQ Central Version 1.7 system.

Before Installing IQ Central Version 1.7

1. If a previous version of IQ Central is installed on the computer, go to the Windows Control Panel and open Add/Remove Programs. Select IQ Central and choose Change. When the Change dialog box appears, choose Remove. *This will not delete the old database.*
2. Locate and back up the old IQ Central database. The file is called 'NTCIPServerDB.mdb'. (The simplest way to do this is to simply rename the file to **NTCIPServerDB-backup.mdb**, or something similar.) The current file may be stored on your C drive in the **Documents and Settings\All Users\Application Data\Peek Traffic\IQCentral** folder (for v1.7 and newer), in the **Documents and Settings\All Users\Application Data\Quixote Traffic\IQCentral** folder (for v1.6 and earlier versions of IQ Central), or it could have been stored where you installed IQ Central itself, or it could be installed somewhere completely different on your system, depending on how you installed IQ Central the previous time.



Note If your system is configured to use a Microsoft SQL Server database rather than the default Access database, you should be sure to backup and restore the SQL Server database using the normal database archival and restore tools of that environment.

3. On each system where IQ Central will be installed, verify that the operating system is at Windows XP. (IQ Central Version 1.7 is not compatible with Windows 2000 or Vista.)
4. Verify that a properly licensed version of either Microsoft Office 2000 or 2003 is installed on each system. (IQ Central Version 1.7 is not compatible with Office 2007.)
5. Locate the license key for IQ Central. This code should have been provided along with the installation CD. If not, contact your Peek Traffic service representative in order to request a valid license key.

Installation Steps

1. Insert the IQ Central installation CD into the CD-ROM drive of the workstation where you want to install the program.
2. If auto-run is not configured on this CD-ROM drive, open a Windows Explorer window and navigate to the drive. Locate the **Setup.exe** installation program and double-click it. This will launch the installation program.
3. Choose the **Install IQ Central** button.
4. Follow the directions on-screen. You will need to accept the software license in order to install the program. When you get to the Customer Information dialog box, enter the user name, organization, and your installation key in the fields. This key will determine whether the BMP or GIS mapping version of IQ Central is installed, as well as which optional modules are installed.
5. If you plan to install to the standard location on the hard drive (**C:\Program Files\Peek Traffic Corp\IQCentral**) then choose **Typical** on the next screen. On the other hand, if you wish to install the system somewhere else on your hard drives, choose Custom.

6. If you chose Custom, press the **Browse** button to select the install location for your IQ Central applications. In the tree view in this window, you also have the option to select whether you want the Help system, and the sample database to be installed with the program. Press **Next**.

Note: For **most** installations of the system, you should install the sample database. If you plan to retain data from a previous version of IQ Central, we do recommend that you install the sample database, and then contact Peek Traffic about restoring your existing data into the new database.

7. Complete the steps in the install until you reach the last screen, then choose the **Finish** button.
8. Restart the computer to complete the installation.
9. Repeat the process on each workstation for which you purchased a license. When installing to client workstations, be sure to select the Custom option and uncheck the "Alarm Server Component".
10. To configure multiple workstations to connect to a single 'IQ Central Server', some work will need to be done configuring the Windows Distributed Communications (DCOM) system. Unfortunately, this process is beyond the scope of this procedure. This process will be done by a Peek Traffic customer service technician.
11. Once the software is installed and the networked workstations are connected to one another, you will then need to configure the system to suit your needs. This process includes the following steps:
 - Installing the map files for your locale
 - Configure software 'Connections' that link to your physical communications channels
 - Installation of the translator hardware for those field devices that need them
 - Configuration of device instances within IQ Central to act as interfaces to your field devices
 - Assignment of Devices to Connections to complete the link between the central software and the field hardware
 - Placement of Device icons in the appropriate locations on the IQ Central versions of your local maps

New Features

Several new features have been added to IQ Central as part of the Version 1.7 update.

Time Sync

IQ Central, version 1.7 adds a greatly improved ability to synchronize the time on connected devices to the current time on the IQ Central communications server. A whole new interface has been added which allows the operator to synchronize devices individually, in groups, by device type, or by 'closed loop' groupings (meaning all devices connected under a single master device.)

Capabilities

With the new Time Sync module, the operator can perform the following tasks:

- Retrieve current time from a single selected device
- Retrieve current time from multiple selected devices
- Retrieve current time from all devices in the system
- Retrieve current time from all devices of a type in a group
- Set time on a selected device
- Set time on multiple selected devices
- Set time on all devices in the system
- Set time on any device that differs from the central time by more than some critical value
- Modify the Time Sync module settings

The central time that is used for synchronization within the Time Sync module is always the value on the computer that hosts the IQ Central NTCIPServer service. This may be an 'IQ Central Communications Server', if one is set up solely and specifically for connecting with devices, or it may just be your single computer IQ Central system, or your general IQ Central server. Whenever you set time on a field device, that is the value that is used, and that is the value that is compared against to determine which devices have a 'critical' difference from the system time.

Opening the Time Sync Module

The Time Sync module can be accessed in a couple of ways. You can open it by going to the **Devices** menu and choosing **Time Sync**.

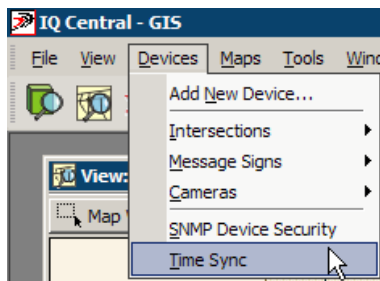


Figure 1 – Opening Time Sync from the menus

Or the operator can access Time Sync by right-clicking on a device in the map and choosing **Time Sync**. If the device is part of a Group, you can also choose the **Group** > <groupname> > **Time Sync** option to open the module with all of the devices in the group selected.

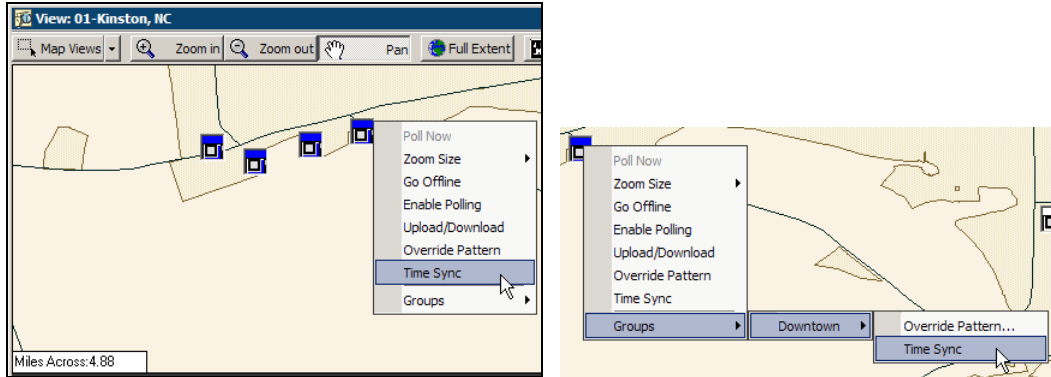


Figure 2 – Opening Time Sync from the Map Viewer

When Time Sync opens, it will pre-select devices from the list based on the selection environment, meaning that if you right click on one device in the map and open Time Sync, that device will be selected in the Time Sync window. In any case, opening the module will present the Time Sync interface as described in the next section.

Using the Time Sync Interface

The Time Sync module adds a new window to IQ Central with a fairly typical layout. It shows a list of devices on the left side of the window. The right side of the window shows a set of devices and their time sync status. The content of this list is based on the selection in the device list to the left. At the bottom of the window are a set of controls used to send and retrieve time information, and to configure the module.

The basic process to use the Time Sync module follows these three steps:

1. Select the grouping of devices in which you are interested using the left side of the window
2. Select which specific devices in the group you want to work with, using the right side of the window
3. Choose what time sync function you wish to perform on the selected devices, using the buttons at the bottom of the window.

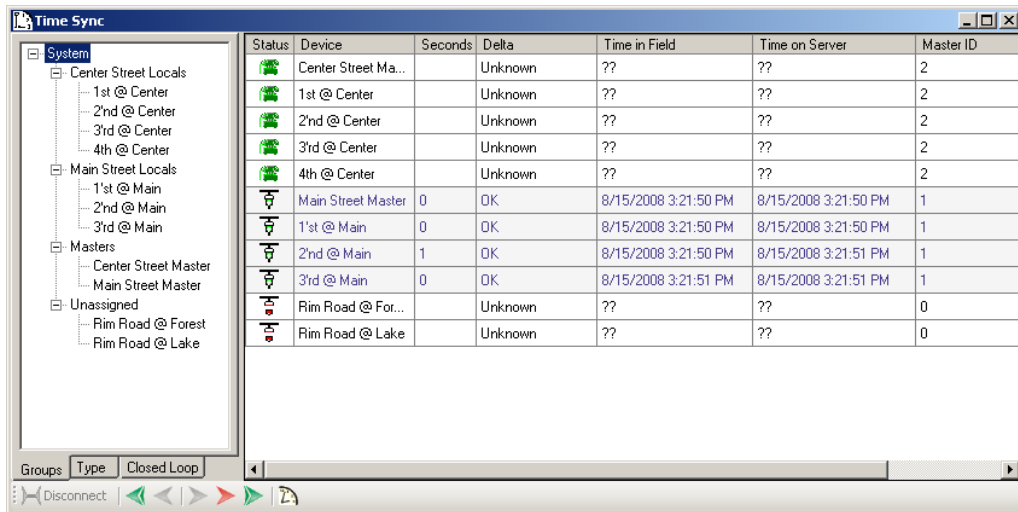


Figure 3 – Time Sync Window – by Groups

The device selection list on the left side of the Time Sync module window can be opened in one of three modes, as selected using the tabs at the bottom of this area. The default view is to show the devices by Groups, using the same Group definitions that function in the Alarms module and in the Map Viewer. In any of the device list options, you can

select anywhere in the hierarchy tree to determine which devices show up in the main area of the Time Sync Window. Picking ‘System’ at the top of the tree will always show all of the devices. In the Groups tab, you can also select a group name, to show all of the devices in that group in the area to the right, or you can select an individual device in the list. Only one item can be selected in the device list at a time, either System, a grouping title, or a single device. (However, multiple devices can be selected in the right-side window.)

Pressing the Type tab at the bottom of the device tree will display the list of devices sorted into device type groups.

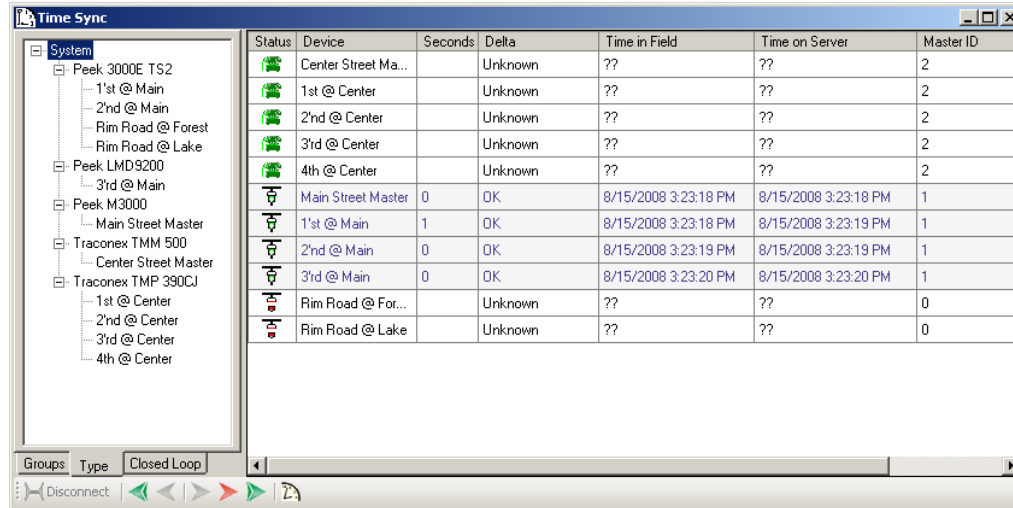


Figure 4 – Time Sync Window – by Device Type

Selecting the ‘Closed Loop’ tab will display the list sorted by masters and local devices. This shows the way devices are logically connected in the field. Devices that are not connected to a master controller are shown in the Isolated Devices node.

Selecting ‘System’ while in the Closed Loop tab of this module lists all of the masters and isolated locals in the system.

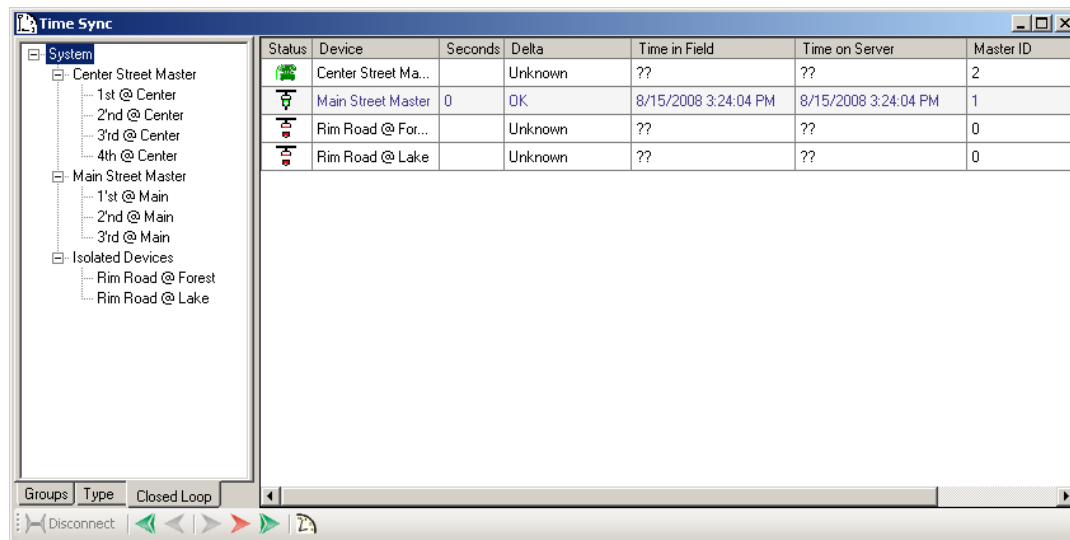


Figure 5 – Time Sync Window – by Closed Loop connections

Once you’ve selected the device Group, Device Type, or closed-loop Master from the left window, we next use the Time Sync window to select particular devices and then perform time sync functions on it or them. The Time Sync device list, shown in **Figure 6**, can be used to select one device by clicking on it, or multiple devices by ctrl-clicking on each additional item. Shift-click on an array of devices to choose a whole set.

Status	Device	Seconds	Delta	Time in Field	Time on Server	Master ID
	Center Street Ma...		Unknown	??	??	2
	1st @ Center		Unknown	??	??	2
	2nd @ Center		Unknown	??	??	2
	3rd @ Center		Unknown	??	??	2
	4th @ Center		Unknown	??	??	2
	Main Street Master	0	OK	8/15/2008 3:21:50 PM	8/15/2008 3:21:50 PM	1
	1st @ Main	0	OK	8/15/2008 3:21:50 PM	8/15/2008 3:21:50 PM	1
	2nd @ Main	1	OK	8/15/2008 3:21:50 PM	8/15/2008 3:21:51 PM	1
	3rd @ Main	0	OK	8/15/2008 3:21:51 PM	8/15/2008 3:21:51 PM	1
	Rim Road @ For...		Unknown	??	??	0
	Rim Road @ Lake		Unknown	??	??	0

Figure 6 – Time Sync device list

The devices in this list can be sorted in ascending or descending order on any of the device statistics at any time by clicking on the header of each column.

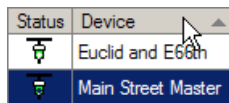


Figure 7 – Sorting lists by heading

The Status column shows the current connection status for each device. Devices are indicated with either a dial-up or direct connection icon, and each of these can either indicate that the connection channel is open or closed.



Note An ‘open connection channel’ does not necessarily indicate that IQ Central is able to communicate with the device. It only indicates that the Windows communications channel assigned to that device has been successfully opened. You can tell if a device channel is actually working by attempting to retrieve time information from the device.

Table 3 – Device Status icons

Icon	Meaning
	A device with a dial-up Connection, showing that the channel has been successfully opened
	A device with a dial-up Connection, but the channel hasn't been opened yet, or cannot be opened. This could be caused by a failure to find a modem, or an improperly configured serial port.
	A device that is currently dialing to make a connection
	A direct Connection channel that has not been, or could not be, opened. This could be an Ethernet channel or a direct serial channel.
	A direct Connection channel that has been successfully opened.

The Time Sync toolbar, located at the bottom of the Time Sync window and shown below, is the primary control for this interface. It's main purpose is to allow the operator to retrieve and send time data to and from field devices on your IQ Central network.

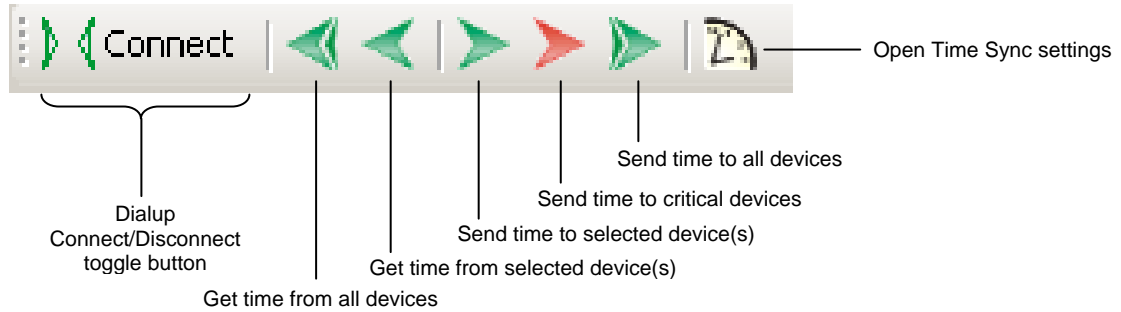


Figure 8 – TimeSync toolbar

The Connect/Disconnect toggle button is used to instruction IQ Central to open and close the device's assigned Connection channel. Opening a connection doesn't verify that the device is talking. You need to try to retrieve the time value from the device to verify that the connection is working and the device is talking.

The next two controls, arrows pointing to the left, send a request to all devices, or to one or more selected devices, to transmit their current time values back to central, where they will be displayed in the Time in Field column of the Time Sync module. If any of the retrieved values are larger than the Error Threshold (see below), then those rows in the device list will be highlighted in red.

The three rightward facing arrows indicate controls used to send time values to devices in the field. This can either be done for one or more selected devices, only those devices that are outside of a critical limit (the red arrow), or all devices. Note that when using the 'Set Time to Critical Devices', you should have already retrieved field times from the device's in question, since the Time Sync module must know the current value inside the device before it knows whether to connect to the device and send a 'sync to center' message.



Note Whenever a Get or Send time action is performed by the Time Sync module, it is logged to the IQ Central activity log and is used as the basis for the Time Sync report.

Finally, the clock symbol opens the Time Sync module's Settings window, as shown in **Figure 9**.

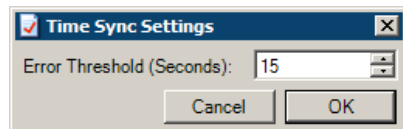




Figure 9 – TimeSync Settings window

The only value in the Time Sync settings window is the critical value against which the module checks when you choose the 'Send Time to Critical Devices' button. If the difference between the current device time value and the time value at the central computer is larger than this number of seconds, then the device's time is automatically synchronized with the central clock. Also, when retrieving the time from a field device, if it's time is outside of this error threshold from the central time, the device's row in the Time Sync module above will be highlighted in red.

Retrieving Times From Devices



To retrieve the time from devices in the field so they will show up in the Time Sync window, follow these steps:

1. Open the Time Sync module.
2. Select the grouping method in the left-side window
3. Select the group containing all of the devices in which you are currently interested

4. In the right-side of the Time Sync window, select the device or devices from which you wish to receive the current time.
5. To retrieve the time from all of the devices currently listed in the right window, choose the **Get Time from All Devices** button. 
6. To retrieve the time from only those devices you've highlighted in the right window, choose the **Get Time from Selected Device(s)** button. 
7. Verify that you have received data from all of the devices in question by checking to see that a valid time message now appears in the **Time in Field** column for each.




Sending Time to Devices

To send the time from the central PC to devices in the field, follow these steps:

1. Open the Time Sync module.
2. Select the grouping method in the left-side window
3. Select the group containing all of the devices in which you are currently interested
4. In the right-side of the Time Sync window, select the device or devices to which you wish to send the current time.
5. To send the time to all of the devices currently listed in the right window, choose the **Set Time to All Devices** button. 
6. To send the time to only those devices you've highlighted in the right window, choose the **Set Time to Selected Device(s)** button. 
7. Verify that the time has been successfully sent by checking that the **Delta** in all of the devices in question now report 'OK'.

Critical Time

To set the sync the central time to only those devices outside of your desired time delta threshold, follow these steps:

1. Open the Time Sync module.
2. Click on the clock symbol to open the **Time Sync settings** window. 
3. Enter the time value, in seconds, which you judge to be the critical difference for setting field device times. The default value is 15 seconds.
4. Close the Time Sync Settings window by pressing **OK**.
5. Using the device tree on the left, select the scope of devices which you wish to check. Make sure the list at right shows all of the devices you want to test.
6. Press the **Get Time for All Devices** button. Notice that any devices that have failed the time sync threshold are now highlighted in red. 
7.  Press the **Set Time to Critical Devices** button to send the time sync message to only those devices indicated in red.
8. Verify that the time has been successfully sent by checking that the **Delta** in all of the devices in question now report 'OK'.

Central Override by Group

The capability to override the current controller pattern was added to IQ Central in version 1.4. This capability has been expanded in version 1.7 to add the ability to override the pattern for an entire Group of devices. For instance, suppose we have a group of controllers called ‘Downtown’, as shown in **Figure 10**.

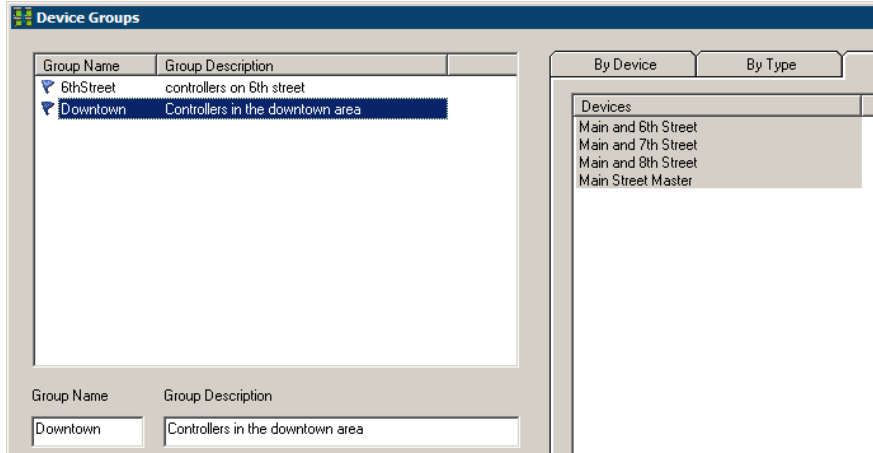


Figure 10 – Definition of a device Group called Downtown

The override function is available in the Map View module. If we right click on a device in the Map Viewer, and it is part of a device group, we now have the option to do a ‘Group Override’, as shown here.

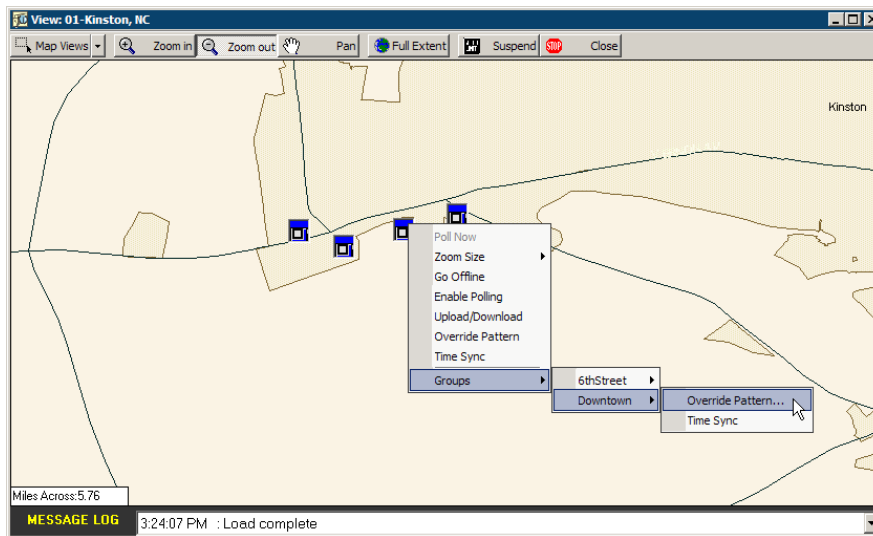


Figure 11 – Overriding the pattern on a group of controllers

This opens the same Override Pattern module you've seen in the past, but if opened through the Group submenu, you can use the module to send the pattern change to all of the devices in the group at once, as shown in **Figure 12**.

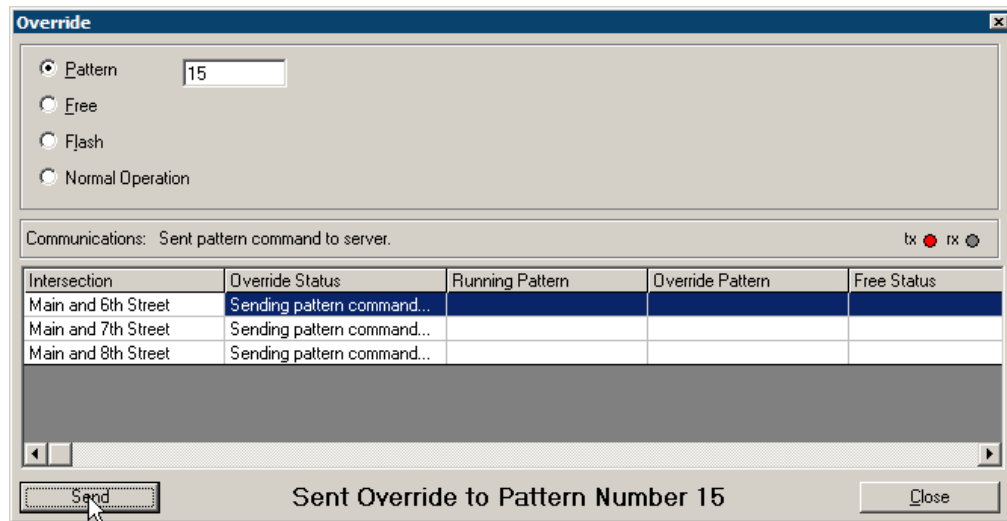


Figure 12 – Sending an Override pattern change to a group of devices

Remote Clearing of Logs

In IQ Central v1.7, the software also gained the ability to clear the onboard logs for all traffic controllers and masters that have that capability, which include all masters and controllers supported by IQ Central, except the Multisonics devices (the 820A and OSAM-32 devices). There are a couple of methods that can be used to clear the logs of a device in IQ Central. These are available from the Map View module and the Status View module.

If a device is visible in the Map View module, right clicking on the device icon now includes an option to ‘Clear Logs/Reset’.

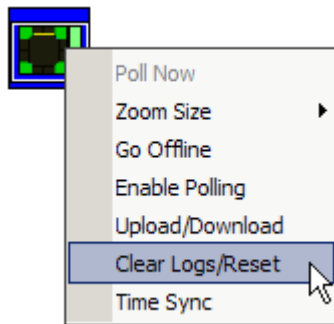


Figure 13 – Choosing Clear Logs/Reset from a Map View device icon

Or, if you go into the Status View module of IQ Central and navigate to the device in question, right-clicking on the device’s status details will also allow you to select the ‘Clear Logs/ Reset’ command.

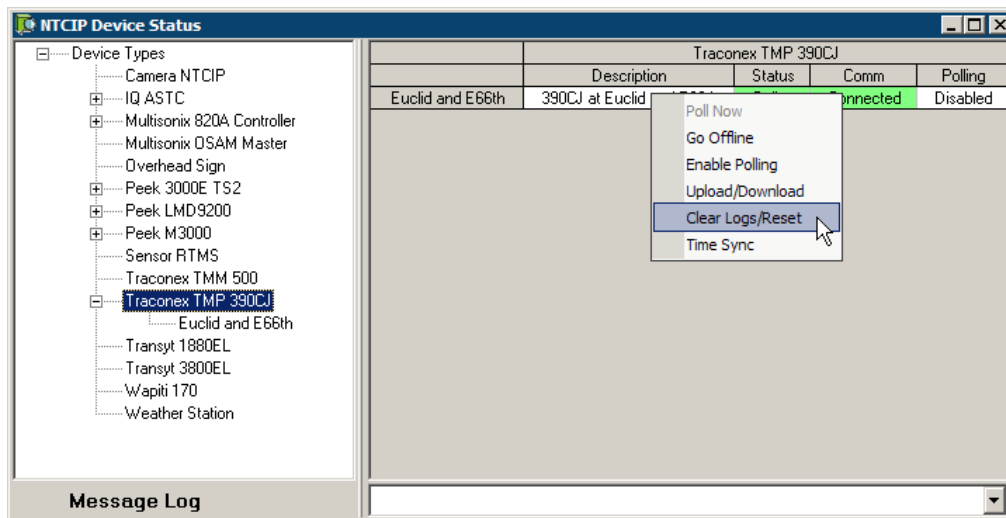


Figure 14 – Clear Logs option in the Status module

Once you've opened the Clear Logs/ Restart module (as shown in **Figure 15**), you can choose to clear all of the logs stored in the device, or select to clear logs by type. Just select the logs you wish to zero out, and press the Clear Logs button.



Note This module is also used to restart devices from the central software. That option is described in the next section of these release notes.

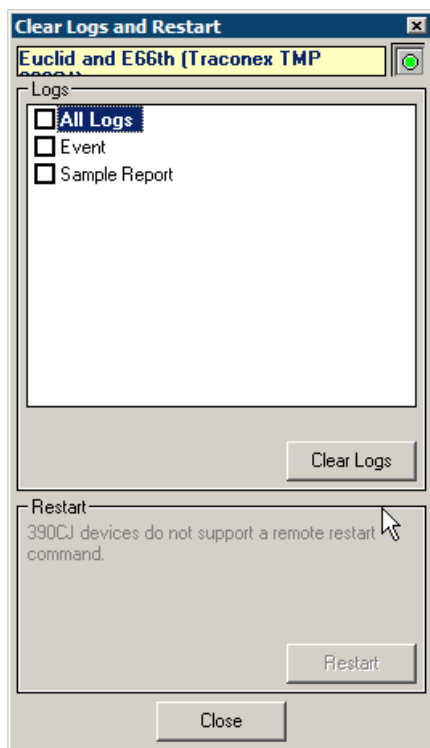


Figure 15 – Clear Logs/Restart module window

Remote Device Restart

IQ Central v1.7 also adds the capability to remotely restart a controller or master controller device, at least for those devices that have this capability. At this time, these devices are the ones that can be restarted from central:

- Transyt 1880EL controllers
- Peek M3000 master controllers
- Peek 3000E controllers

This capability is launched in exactly the same way (using the same commands, in fact) as the new Clear Logs feature.

In the Map Viewer, you can right-click on a device and choose the Clear Logs/ Restart command, or you can right-click on a device in the Status Viewer and choose Clear Logs/Restart. Again, we'll show the Clear Logs and Restart module below. The bottom part of the window shows the Restart controls.

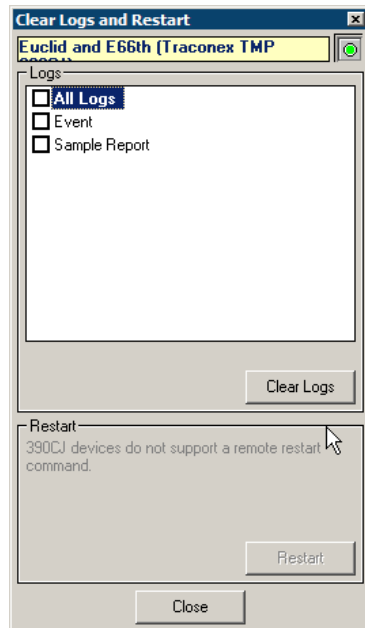


Figure 16 – Clear Logs/Restart module window

The Restart control is simple to use, if the device CAN be restarted using this feature, then the bottom part of the window will be available for use. Simply select the Restart button to restart the device in the field.

Unlike the clear logs commands, sending a Restart command will cause IQ Central to prompt you again for your IQ Central login details. You must re-enter your login to send the Restart command to the device. This is a safety feature to prevent anyone without knowledge and access to IQ Central from inadvertently sending intersections into Flash.



Warning

Obviously, restarting a controller is a serious safety issue. The intersection may go into Flash mode for as long as it takes the controller to go through its startup routine and return to normal operation. And keep in mind that ***you should be very confident of the controller's startup programming*** before you send a Restart command to any field device.

3000E controllers will go into Flash mode if they are reset.

M3000E masters will restart, and their controllers will temporarily lose their connection to the master. These controllers may temporarily go into FREE mode.

An 1880EL controller that is sent the Restart command will simply restart its coordination engine, so the entire intersection will not be sent into Flash mode.

Issues Addressed in this Release

The following issues and reported problems with previous versions of IQ Central have been addressed and repaired in IQ Central Version 1.7

Table 4 – The Version 1.7 release of IQ Central addresses the following issues

Issue	Resolution	Case #
Type in IQ Central Upload/Download module for 3000E TS2 Coordination pane	Popup window did say 'Cplit:'. This has been corrected to say 'Split.'	3957
Completion bar during transmission of M3000 database maxes out at 78%	Even when a transmission is completed, the transmission bar in the Upload/Download module when saving a page to the database doesn't go to 100%. This has been corrected so that the transmission bar accurately reflects how much of the data has been transferred.	4050
In Upload/Download module, cells that have been modified and returned to original value still show 'modified' color	Color coding in the Upload/Download module now recognizes when a parameter has returned to its pre-edit state.	4057
In the Upload/Download module, transmitting the clock data to a TMM500 or a 390CJ sent the old clock values stored in the database to the controller	This screen in Upload/Download is now read-only. Time setting commands for the Traconex devices should be performed using the new Time Sync module, as will all other types of controllers.	4063
Enhancement request: A clear logs command for TMM500 and 390CJ controllers	This has been added via the new Clear Logs/Restart module.	4064
Map View: Disconnecting a dialup system from inside of the map results in comm status icons going red and detail icons remaining visible.	Disconnecting a dialup device from inside the map viewer now automatically forces the communications icons to gray and immediately clears any detail icons.	4065
Upload/Download: When retrieving and editing TOD data for an EL controller, cycle-offset-split values are not matching the values in the controller	The TOD editing controls in the Upload/Download forms (for EL controllers ONLY) were inadvertently modifying TOD values during retrieval from the controller and during operator editing actions. These have been corrected so that the form correctly represents the current values as retrieved, and then accurately represents user's choices made using the editing controls.	4067
Upload/Download module: When editing data and transmitting to 3000E controllers, customers have reported that cycle 4 and 5 settings are getting switched when received by the controller.	This is a specific issue with the 3000E controller's internal database that was detected and handled in the CLMATS era in a similar fashion. IQ Central now recognizes and handles this special 3000E requirement. Cycle 4 and 5 parameters sent to 3000E controllers now get placed in the correct locations in the 3000E database.	4097
IQ Central's alarm viewer is reporting Manual Control Enabled (MCE) status for 3000Es when the Free input is active.	The 3000E translator firmware was reporting the localOverride bit active in the short Alarm Status object whenever the Free input was active. The 3000E firmware has been corrected so that a Free input does not get reported as MCE to IQ Central.	4098
Upload/Download module: The Time of Day/Circuit Override page was difficult to use because the number and functions of individual circuits were not labeled.	The circuits are now identified in the Upload/Download module by column headers indicating circuit number and function.	4099
Upload Download module: 3000E Detector pages do not include detector number headings	The Upload/Download module pages for 3000E detectors have been modified to indicate which detectors are being edited on each page.	4100
Upload/Download module: 3000E Phase modes: CNA-1, Walk Rest Modifier, and Inhibit Max were missing from the programming screens	A new 'Phase Modes' page has been added under the Controller section of the database for 3000E controllers' database forms, adding all of these missing parameters, and several others.	4103

Issue	Resolution	Case #
Upload/Download module: 3000E COS/F to TOD Circuits page was not implemented.	This page of data now exists in the database. Also, parameters on this screen now have a '0 (Unknown)' parameter value option.	4104
Upload/Download module: 3000E Coordinated Phases database group was not copying or downloading properly.	The problems with transferring data to and from the 3000E Coordination phases pages have been corrected so that values accurately get sent from location to location. This has been extensively tested.	4105

Additional Guidance on IQ Central

The following additional resources are available for all customers should you have the need for extra guidance concerning the IQ Central software and its use with a variety of hardware.

Documentation

Table 5 — Additional documentation available for IQ Central and related hardware

Document	Part Number
IQ Central Release Notes	99-427
IQ Central Help System	<i>Included with product</i>
IQ Central Operating Manual	81-1123
Quixote IQ ATC CBD Controller Manual	81-1164
Quixote IQ ATC TS2/2 Controller Manual	81-1190
Peek 3000E Controller Operating Manual	8204C
Peek 3000E Firmware Release Notes	99-332
Peek LMD 9200 Operating Manual	060758
Peek M3000E Master Controller Operating Manual	5928
Peek M3000E Master Firmware Release Notes	99-329
Multisonics 820A OSAM Controller Operating Manual	006922
Multisonics OSAM 32 Master Controller Operating Manual	RM-0891
Traconex TMM500 Master Operating Manual	28027317-001
Traconex 390CJ Controller Operating Manual	MN078056
Transyt 3800EL Master Controller Operating Manual	81-1191
Transyt 1800EL Controller Operating Manual	81-1192

Technical Support

This contact information will connect you with the IQ software technical support staff of Peek Traffic Corporation, should you require additional help concerning this update.

Peek Traffic Corporation

Software Technical Support

2511 Corporate Way
 Palmetto, FL 34221
 toll free in the U.S.: 1.800.245.7660
 tel: 1.941.845.1200
 fax: 1.941.845.1504
 email: tech.support@peektraffic.com