

Annual Reports for TOPS

Peek is pleased to announce the initial release of the Annual Reports for TOPS™. After installation of this package, which requires a previous installation of TOPS 3.7, a new annual summary report will be available. (Note: Even though this is the first release of this report, the version number embedded within the code is version 3.8.1 since it enhances the functionality in TOPS 3.7)

Product.....**Annual Reports for TOPS**
Version**3.8.1**
Release Date**07/26/07**

Product Requirements

This software update requires a copy of TOPS 3.7. There are no additional requirements specific to these reports.

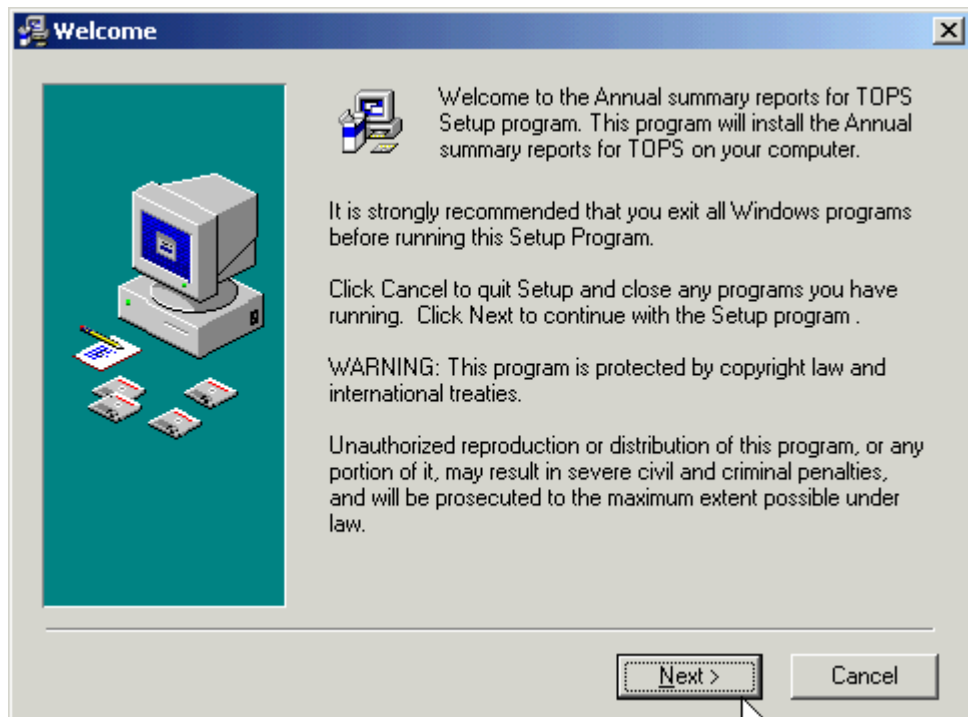
Contents

Installation Notes.....	2
Additional Guidance on the TOPS Annual Reports	4
Technical Support	4

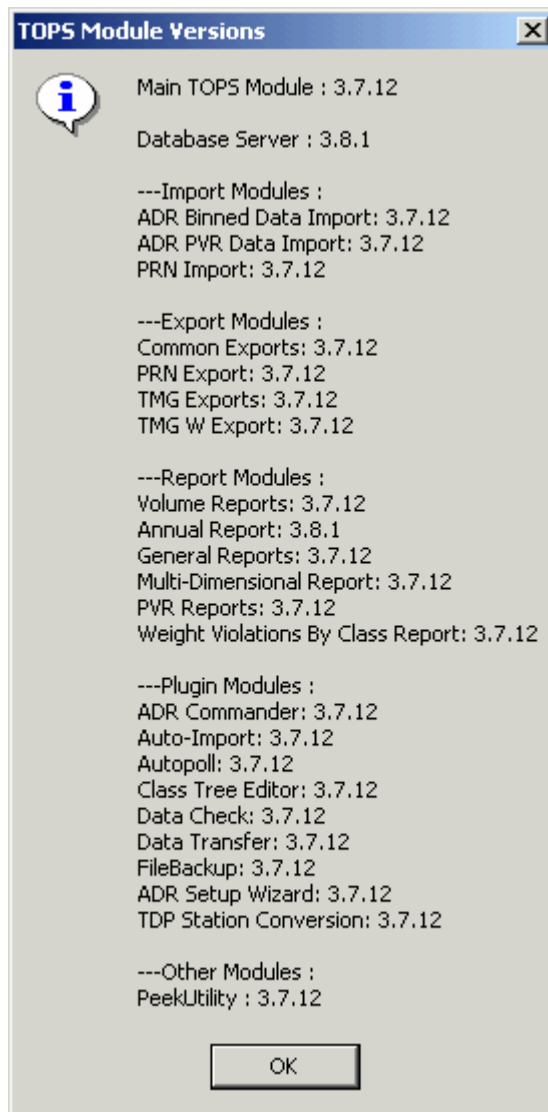
Installation Notes

To install the TOPS annual summary report:

1. Copy the annual report installation file (99-479-3_8_1_AnnualSummaryReport.exe) which you should have received at the same time as these release notes onto the machine where TOPS is already installed.
2. Ensure that you are logged on to the machine as a user with local administrator privileges. (If you do not do so, the report may not be installed correctly.)
3. Using Windows Explorer, or similar, run the 99-479-3_8_1_AnnualSummaryReport.exe file. You should see a screen like the one shown below.



4. Click the “next” button to advance. The installation will automatically detect the presence of TOPS and install to the appropriate folder.
5. **[Optional]** If desired, once the installation has completed you can verify that it was successful by launching TOPS, choosing Help / About TOPS, and clicking on the TOPS Versions button. Among the items listed you should find references to version 3.8.1 of the Database Server and the annual report module as shown below.



Additional Guidance on the TOPS Annual Reports

Once installed, the annual summary report will appear together with all the other TOPS reports. Like the multi-dimensional report, the annual summary report has several user-configurable options such as the type of data to use for the column header (for example Class or Channel), the data interval, and various summary options.

Technical Support

This contact information will connect you with the technical support staff of Peek Traffic Corporation, should you require additional help concerning TOPS or the annual report described here.

Peek Traffic Corporation - Customer Service Center

2511 Corporate Way
Palmetto, FL 34221
toll free in the U.S.: 1.800.245.7660
tel: 1.941.845.1200
fax: 1.941.845.1504
email: service@peekglobal.com